

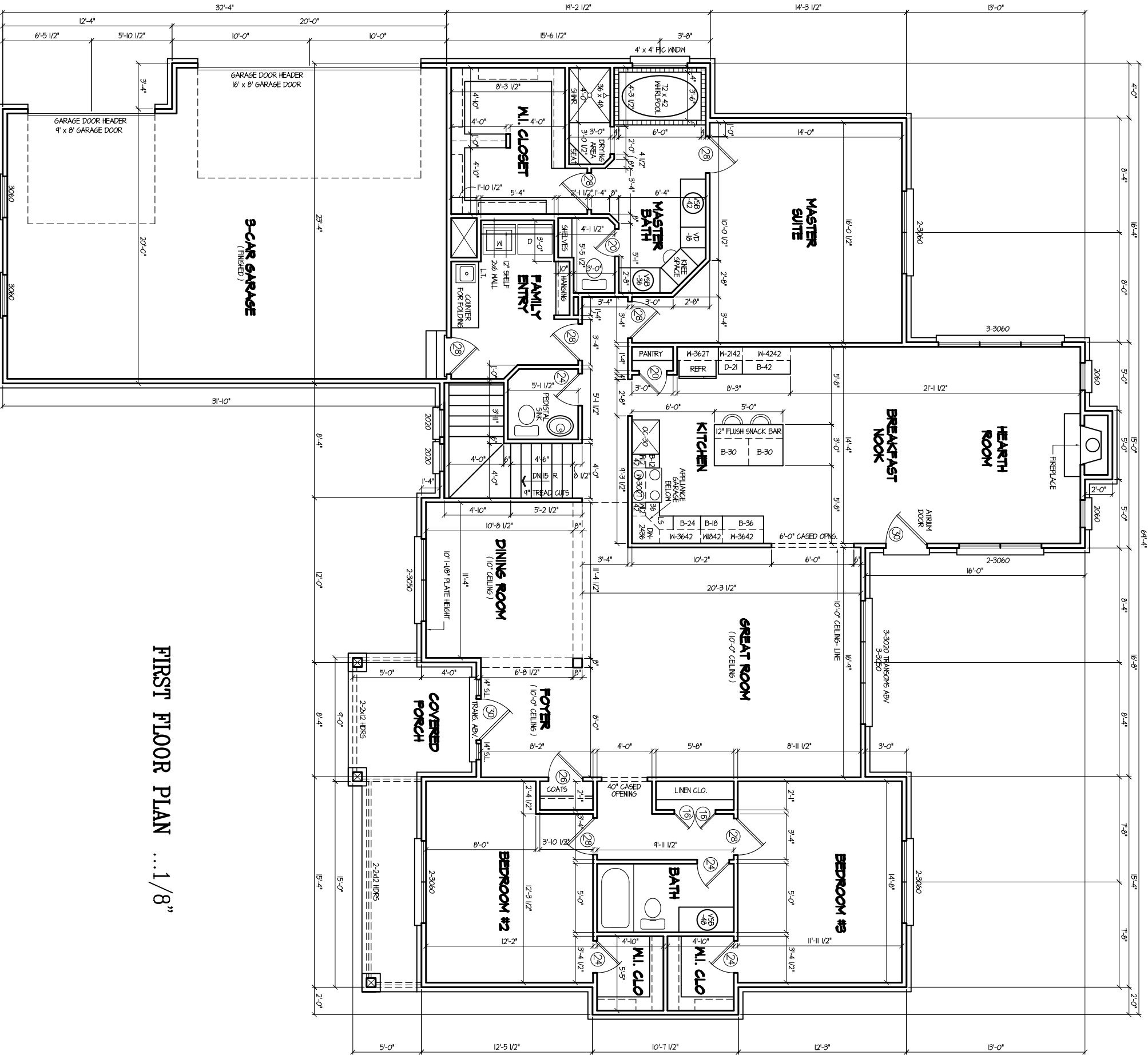
- DIMENSION NOTES:
- 1) ALL EXTERIOR DIMENSION STRINGS ARE OUT TO OUT SHEATHING UNLESS NOTED OTHERWISE.
 - 2) ALL INTERIOR STRINGS ARE FRAME TO FRAME.
 - 3) ALL UNDIMENSIONED WALL THICKNESSES ARE 3 1/2".
 - 4) ALL EXTERIOR WALL SHEATHING TO BE 1/2".

- NOTES:
- 1) ALL WDM & S&G HEAD HTS @ 7'-10 1/8" W/ 2x12 HDRS UNDER DBL 2x4 PLATE EXCEPT AS NOTED.
 - 2) ALL PLATE HEIGHTS @ 9'-1 1/8" UNLESS OTHERWISE NOTED.
 - 3) ALL DOORS TO BE CASSED UNLESS SHOWN WITHOUT JANBS.
 - 4) ALL INTERIOR DOORS TO BE SOLID CORE WITH THE EXCEPTION OF CLOSETS.
 - 5) SOLID STUDS UNDER ALL BEAMS

50. FT⁶.

FIRST FLOOR 50 FT. - 2,402 SF
GARAGE 50 FT. - 714 SF

9 FT CEILINGS - 1ST FLR



FIRST FLOOR PLAN ... 1/8"

| | | | |
|-----------|------------------------------|-----------|----------------------------------|
| SHEET NO. | PARSETICH CUSTOM HOMES, INC. | | PARSETICH CUSTOM HOMES INC |
| | 2 | 4-28-2008 | |
| | MEN-FP.DWG | | |